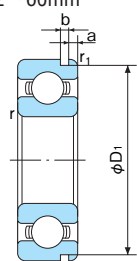


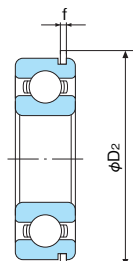
Deep-groove Ball Bearings

With snap ring groove / With snap ring / Shield type with snap ring

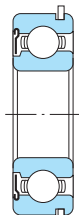
Bore Diameter: 32~60mm



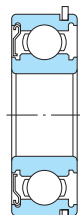
With snap ring groove (N)



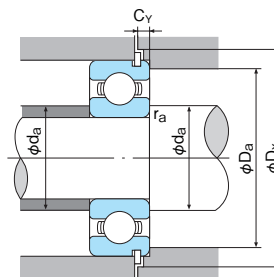
With snap ring (NR)



Shield type with snap ring (ZNR)



Shield type with snap ring (ZENR)



Dynamic equivalent radial load

$$Pr = XFr + YFa$$

Static equivalent radial load

Larger value of following to be used:

$$Por = 0.6Fr + 0.5Fa$$

$$Por = Fr$$

foFa Cor	e	Fa Fr ≤ e		Fa Fr > e	
		X	Y	X	Y
0.172	0.19				2.30
0.345	0.22	1	0	0.56	1.99
0.689	0.26				1.71
1.03	0.28				1.55
1.38	0.30	1	0	0.56	1.45
2.07	0.34				1.31
3.45	0.38				1.15
5.17	0.42	1	0	0.56	1.04
6.89	0.44				1.00

1N=0.102kgf

Boundary dimensions (mm)					Dimensions of snap ring groove and snap ring (mm)					Bearing No. (1)			Basic dynamic load rating Cr (N)	Basic static load rating Cor (N)	Factor fo	Limiting speed (min ⁻¹)		Abutment and fillet dimensions (mm)					Mass (kg)	Bearing No.
d	D	B	r (min)	r1 (min)	D1 (max)	a (max)	b (min)	D2 (max)	f (max)							Grease lubrication	Oil lubrication	da (min)	Da (max)	Dx (min)	ra (max)	Cy (max)		
32	65	17	1	0.5	62.6	3.28	1.9	70.7	1.7	62/32N	62/32NR	62/32ZNR	22400	13100	13.6	11000	12000	38	59	71.5	1	4.6	0.230	62/32N
	75	20	1.1	0.5	71.83	3.28	1.9	81.6	1.7	63/32N	63/32NR	63/32ZNR	30000	16200	12.7	9500	11000	39	68	83	1	4.6	0.382	63/32N
35	47	7	0.3	0.3	45.7	1.3	0.95	49.8	0.85	6807N	6807NR	6807ZENR	4750	3800	16.4	14000	16000	37	45	50.5	0.3	1.8	0.030	6807N
	55	10	0.6	0.5	53.7	1.7	0.95	57.8	0.85	6907N	6907NR	6907ZENR	10400	7150	15.6	12000	15000	39	51	58.5	0.6	2.3	0.075	6907N
	62	14	1	0.5	59.61	2.08	1.9	67.7	1.7	6007N	6007NR	6007ZENR	16000	10300	14.8	12000	14000	40	57	68.5	1	3.4	0.150	6007N
	72	17	1.1	0.5	68.81	3.28	1.9	78.6	1.6	6207N	6207NR	6207ZENR	25700	15300	13.8	9800	11000	42	65	80	1	4.6	0.288	6207N
	80	21	1.5	0.5	76.81	3.28	1.9	86.6	1.6	6307N	6307NR	6307ZENR	33500	19100	13.2	8800	10000	44	71	88	1.5	4.6	0.457	6307N
40	52	7	0.3	0.3	50.7	1.3	0.95	54.8	0.85	6808N	6808NR	6808ZENR	5950	4900	16.2	12000	14000	42	50	55.5	0.3	1.8	0.034	6808N
	62	12	0.6	0.5	60.7	1.7	0.95	64.8	0.85	6908N	6908NR	6908ZENR	13700	9950	15.8	11000	13000	44	58	65.5	0.6	2.3	0.110	6908N
	68	15	1	0.5	64.82	2.49	1.9	74.6	1.7	6008N	6008NR	6008ZENR	16800	11500	15.3	10000	12000	45	63	76	1	3.8	0.186	6008N
	80	18	1.1	0.5	76.81	3.28	1.9	86.6	1.7	6208N	6208NR	6208ZENR	29100	17900	14.0	8700	10000	47	73	88	1	4.6	0.366	6208N
	90	23	1.5	0.5	86.79	3.28	2.7	96.5	2.46	6308N	6308NR	6308ZENR	40500	24100	13.2	7800	9200	49	81	98	1.5	5.9	0.633	6308N
45	58	7	0.3	0.3	56.7	1.3	0.95	60.8	0.85	6809N	6809NR	6809ZENR	5350	4900	16.1	11000	13000	47	56	61.5	0.3	1.8	0.042	6809N
	68	12	0.6	0.5	66.7	1.7	0.95	70.8	0.85	6909N	6909NR	6909ZENR	14100	10900	16.1	10000	12000	49	64	72	0.6	2.3	0.124	6909N
	75	16	1	0.5	71.83	2.49	1.9	81.6	1.7	6009N	6009NR	6009ZENR	20900	15200	15.3	9200	11000	50	70	83	1	3.8	0.239	6009N
	85	19	1.1	0.5	81.81	3.28	1.9	91.6	1.7	6209N	6209NR	6209ZENR	32500	20500	14.1	7800	9300	52	78	93	1	4.6	0.407	6209N
	100	25	1.5	0.5	96.8	3.28	2.7	106.5	2.46	6309N	6309NR	6309ZENR	53000	32000	13.1	7000	8200	54	91	108	1.5	5.4	0.833	6309N
50	65	7	0.3	0.3	63.7	1.3	0.95	67.8	0.85	6810N	6810NR	6810ZENR	6400	5800	16.1	10000	12000	52	63	68.5	0.3	1.8	0.054	6810N
	72	12	0.6	0.5	70.7	1.7	0.95	74.8	0.85	6910N	6910NR	6910ZENR	14500	11700	16.1	9500	11000	54	68	76	0.6	2.3	0.127	6910N
	80	16	1	0.5	76.81	2.49	1.9	86.6	1.7	6010N	6010NR	6010ZENR	21800	16600	15.6	8500	10000	55	75	88	1	3.8	0.252	6010N
	90	20	1.1	0.5	86.79	3.28	2.7	96.5	2.46	6210N	6210NR	6210ZENR	35000	23200	14.4	7100	8600	57	83	98	1	5.4	0.463	6210N
	110	27	2	0.5	106.81	3.28	2.7	116.6	2.46	6310N	6310NR	6310ZENR	62000	38100	13.1	6400	7500	60	100	118	2	5.4	1.07	6310N
55	72	9	0.3	0.3	70.7	1.7	0.95	74.8	0.85	6811N	6811NR	6811ZENR	8800	8100	16.2	8700	10000	57	70	76	0.3	2.3	0.085	6811N
	80	13	1	0.5	77.9	2.1	1.3	84.4	1.12	6911N	6911NR	6911ZENR	16000	13200	16.2	8200	9600	60	75	86	1	2.9	0.180	6911N
	90	18	1.1	0.5	86.79	2.87	2.7	96.5	2.46	6011N	6011NR	6011ZENR	28300	21300	15.4	7700	9000	61	84	98	1	5	0.375	6011N
	100	21	1.5	0.5	96.8	3.28	2.7	106.5	2.46	6211N	6211NR	6211ZENR	43500	29300	14.4	6400	7700	64	91	108	1.5	5.4	0.607	6211N
	120	29	2	0.5	115.21	4.06	3.1	129.7	2.82	6311N	6311NR	6311ZENR	71500	44500	13.1	5800	6800	65	110	131.5	2	6.5	1.37	6311N
60	78	10	0.3	0.3	76.2	1.7	1.3	82.7	1.12	6812N	6812NR	6812ZENR	11500	10600	16.3	8000	9500	62	76	84	0.3	2.5	0.110	6812N
	85	13	1	0.5	82.9	2.1	1.3	89.4	1.12	6912N	6912NR	6912ZENR	15200	13500	16.5	7600	9000	65	80	91	1	2.9	0.195	6912N
	95	18	1.1	0.5	91.82	2.87	2.7	101.6	2.46	6012N	6012NR	6012ZENR	29400	23200	15.5	7100	8500	66	89	103	1	5	0.403	6012N
	110	22	1.5	0.5	106.81	3.28	2.7	116.6	2.46	6212N	6212NR	6212ZENR	52500	36000	14.3	6000	7100	69	101	118	1.5	5.4	0.783	6212N
	130	31	2.1	0.5	125.22	4.06	3.1	139.7	2.82	6312N	6312NR	6312ZENR	82000	52000	13.2	5400	6300	72	118	141.5	2	6.5	1.70	6312N

Note: (1) Bearing No. ZE means one shield type, two shields type is also available.
Remark: Dimensions of snap ring groove and snap ring are shown on pages 45 to 48.